

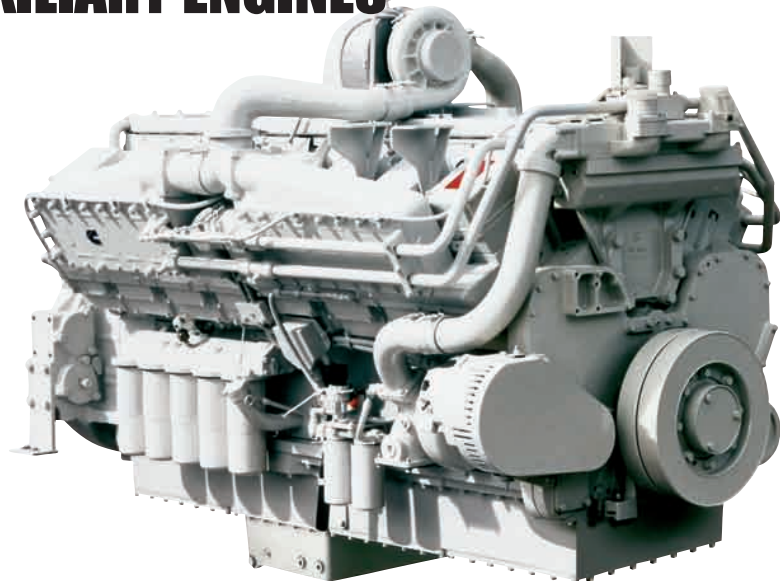
KTA50



MARINE PROPULSION AND AUXILIARY ENGINES

Specifications

ENGINE TYPE	V-16 CYLINDER, 4 STROKE DIESEL
BORE & STROKE	159 mm x 159 mm (6.25 in x 6.25 in)
DISPLACEMENT	50 L (3067 in ³)
ROTATION	COUNTERCLOCKWISE FACING FLYWHEEL
ASPIRATION	TURBOCHARGED/AFTERCOOLED
EMISSIONS	IMO



Ratings

ENGINE MODEL	OUTPUT POWER			ENGINE SPEED RPM	RATING DEFINITION	FUEL CONSUMPTION** L/hr (gal/hr)
	kW	HP	kWe*			
VARIABLE SPEED						
KTA50-M2	1044	1400	-	1600	CONTINUOUS	179.5 (47.4)
KTA50-M2	1193	1600	-	1800	CONTINUOUS	214 (56.5)
KTA50-M2	1193	1600	-	1900	HEAVY DUTY	208.5 (55)
KTA50-M2	1268	1700	-	1800	HEAVY DUTY	225 (59.5)
KTA50-M2	1342	1800	-	1900	HEAVY DUTY	236 (62.4)
KTA50-M2	1398	1875	-	1950	MCD	247 (65.2)
FIXED SPEED						
KTA50-D(M1)	1007	1350	967	1500 (50 Hz)	PRIME	109.7 (29)
KTA50-D(M1)	1097	1470	1053	1500 (50 Hz)	PRIME	117.1 (30.9)
KTA50-D(M1)	1141	1530	1096	1800 (60 Hz)	PRIME	123.8 (33.2)
KTA50-D(M1)	1291	1730	1239	1800 (60 Hz)	PRIME	139.3 (36.8)

* kWe reflects the approximate amount of power available when used in a keel cooled genset configuration

** Average fuel consumption based on ISO 8178 E3 Standard Test Cycle (variable speed models) and ISO 8178 D2 Standard Test Cycle (fixed speed models)



Photo courtesy of Alan Haig-Brown

The crew boat Joyce McCall is powered by four KTA50-M2 engines

The Cummins Advantage

24 Hour Customer Support

Reliable & Durable Products

Best in Class Life Cycle Cost

Comprehensive Global Warranty

**EVERY™
JOB.**

KTA50



MARINE PROPULSION AND AUXILIARY ENGINES

Features and Benefits

Engine Design - Low profile for ease of installation and service. Replaceable wet cylinder liners offer longer life and lower rebuild cost. Gallery cooled pistons for maximum durability

Fuel System - Dependable Cummins PT fuel system can be operated mechanically or with CENTRY electronics for precise engine fueling. Step Timing Control (STC) allows for smooth engine acceleration under load

Cooling System - Keel cooled or engine mounted plate heat exchanger for reduced installation cost and less maintenance. Spin-on Cummins water treatment filters for protection against cooling system corrosion

Exhaust System - Dry exhaust manifold with water shielding for reduced fuel consumption and improved performance

Air System - Marine grade air filters with air inlet restriction indicator. Twin Holset turbochargers optimized for marine usage

Lubrication System - Standard (151 L [40 gal]) or high capacity (185 L [49 gal]) marine grade oil pan. Cummins spin-on oil filter cartridge available handed for simplified service

Electronics - 24-volt standard electrical system with 12-volt option available. Marine grade wiring harness

Certifications - Complies with IMO emissions regulations. Certificates of compliance are available from the U.S. EPA and Lloyd's Register of Shipping. Consult your local Cummins professional for a complete listing of current marine agency approvals for this engine

Optional Equipment - Contact your local Cummins professional for a list of optional equipment available on this engine

- Centinel Oil Management System allows for extended or eliminated oil changes
- Prelub starter protects against dry starts
- Direct mounted front power take-off
- Duplex lube and fuel filtration
- Engine room & pilot house panel with analog gauges

Dimensions

LENGTH	2694 mm	106 in	KC
	3129 mm	123 in	HX
WIDTH	1564 mm	62 in	
HEIGHT	2252 mm	89 in	
WEIGHT	5431 kg	11973 lb	

Dimensions and weight may vary based on selected engine configuration

Every Question. Answered.

Marine Web Site (marine.cummins.com) - Offers product specifications, installation drawings and technical information as well as answers to frequently asked questions

QuickServe® Online (quickservice.cummins.com) - Gives easy access to parts and service information for all Cummins engines. Find the information you need with our high-speed search function and your engine's serial number



Cummins Online Product Registration - Register your Cummins engine quickly and easily at marine.cummins.com to ensure quality parts and service

Distributor Expertise - The best source for service, parts and application assistance. To find your nearest Cummins distributor/dealer, go to the Worldwide Service Locator (click on Service Locator at wsl.cummins.com). If you need assistance beyond what your local Cummins professional has offered, contact the Regional Office for your area or send an e-mail to wavemaster@cummins.com

Global Support Network - Backed by the strength of Cummins distribution network with over 550 marine service locations in 160 countries, Cummins engines include a comprehensive, worldwide warranty



Cummins Inc.
4500 Leeds Ave. - Suite 301
Charleston, SC 29405
U.S.A.

Internet: <http://marine.cummins.com>

Bulletin M10053 Printed in U.S.A. 3/07
©2007 Cummins Inc.