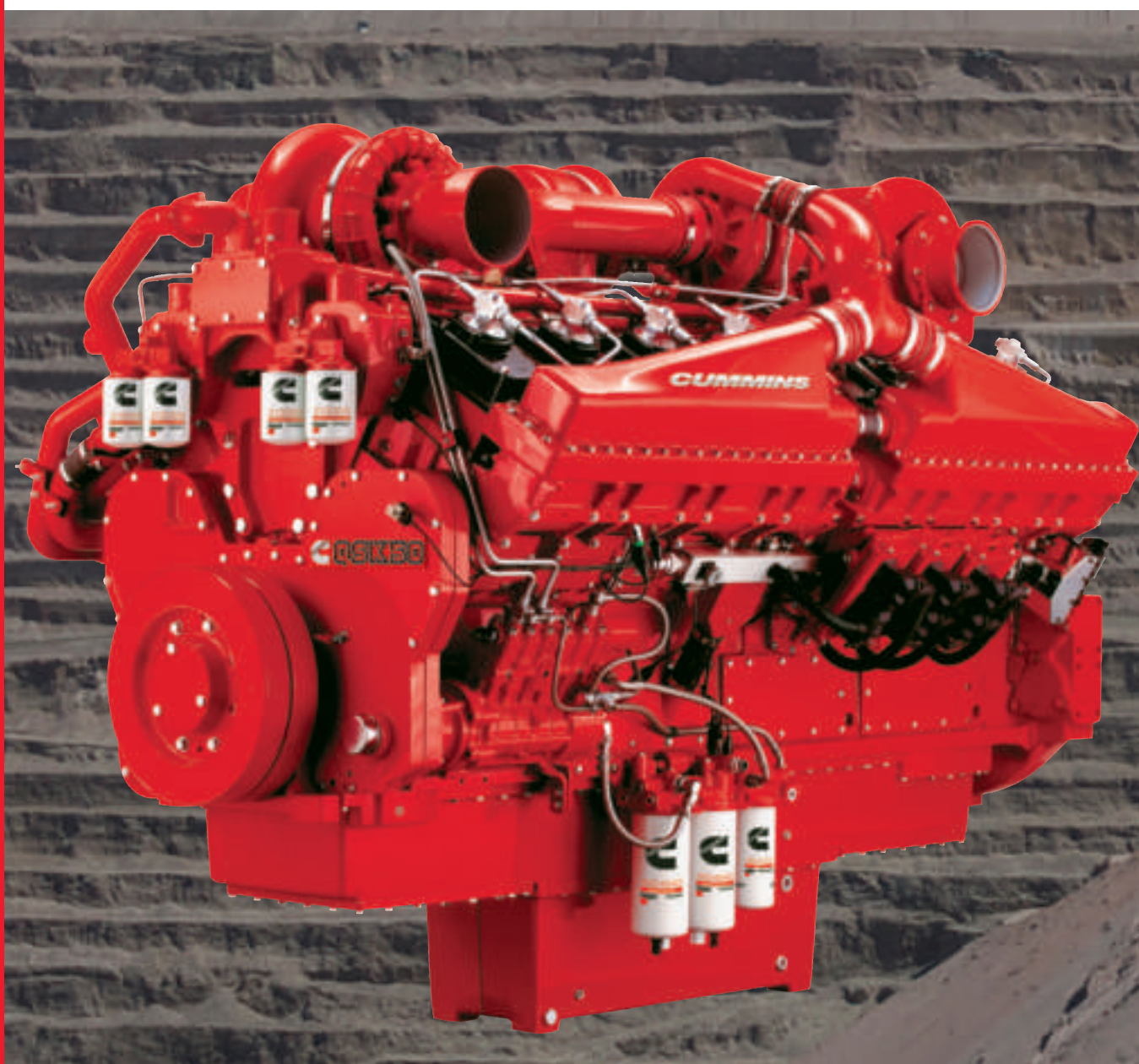




Ready For More. Every™ Ton.

QSK50 Engines For Mining Applications.



QSK50.

More Innovation.

The QSK50 builds on the legendary performance of the Cummins K2000E that our customers have come to expect from Cummins engines. The Cummins high-pressure Modular Common Rail Fuel System (MCRS) works together with full-authority electronic controls to achieve exceptional combustion efficiency, allowing equipment to handle increasing load demands rapidly.

The upgraded fuel system also improves cold-start capability, lowers noise output (the QSK50 is 80 percent quieter than its predecessor, the K50) and reduces vibration, resulting in a safer and more comfortable work environment for equipment operators and mine personnel. The QSK50 is available in a wide range of heavy-duty front-end loaders, excavators and haul trucks with engine power outputs from 1400 hp to 2000 hp (1044-1491 kW).

More Robust Features.

- Single-piece ferrous-cast ductile iron pistons with twin-piston cooling nozzles provide maximum durability and reliability, delivering 10 percent longer life-to-overhaul
- The Prelub system pressurizes the entire lube system before cranking, reducing friction and extending life-to-overhaul
- Longer service intervals and increased uptime are achieved with the ELIMINATOR™ full-flow/bypass filtration system and the CENTINEL™ continuous oil replacement system

More Technology.

The QSK50 incorporates an innovative package of upgraded components that improves cold-start capabilities, lowers noise output and reduces vibration. Combining those improvements with lower engine emissions results in a safer and more comfortable work environment for equipment operators and mine personnel, without compromise to engine reliability, durability and performance.



Cummins Inc.
Box 3005
Columbus, IN 47202-3005
U.S.A.

Phone: 1-800-DIESELS™ (1-800-343-7357)
Fax: 1-800-232-6393
Internet: cumminsengines.com

Twitter.com/CumminsEngines
YouTube.com/CumminsEngines

Bulletin 4087275 Printed in U.S.A. 8/12
©2012 Cummins Inc.

Ratings

ENGINE MODEL*	ADVERTISED HP (kW) @ RPM	PEAK TORQUE LB-FT (N•M) @ RPM
QSK50 2000	2000 (1491) @ 1900	5805 (7871) @ 1500
QSK50 1675	1675 (1249) @ 1800	5375 (7288) @ 1500
QSK50 1600	1600 (1193) @ 1800	5041 (6835) @ 1500
QSK50 1500	1500 (1119) @ 1900	5041 (6835) @ 1300
QSK50 1500	1500 (1119) @ 1800	4846 (6570) @ 1400
QSK50 1400	1400 (1044) @ 1800	4705 (6379) @ 1300

*Cummins customers can use Tier 2 engines in North America through 2017 by utilizing U.S. EPA's Transitional Program for Equipment Manufacturers. All QSK50 ratings are available for use in nonregulated regions where engines are not subject to certification.

Specifications

Engine Type	60° Vee, 16-Cylinder	
Displacement	3,066.4 CU IN	50.25 LITERS
Bore and Stroke	6.25 IN x 6.25 IN	159 MM x 159 MM
Oil System Capacity	216 U.S. QT	204 LITERS
Coolant Capacity	180 U.S. QT	170 LITERS
Aspiration	Single-Stage Turbocharged Aftercooled	Two-Stage Turbocharged Aftercooled and Intercooled
Length	102.7 IN	2,609 MM
Width	58.7 IN (1,491 MM)	57.9 IN (1,471 MM)
Height	75.2 IN (1,910 MM)	74.7 IN (1,897 MM)
Dry Weight	13,822 LB (6,270 KG)	12,698 LB (5,760 KG)
Wet Weight	14,808 LB (6,717 KG)	13,590 LB (6,164 KG)

More Confidence.

QSK50 engines are backed by the best warranty in the industry, with full coverage for unlimited hours the first year, extending through 2 years or 2,000 hours, whichever comes first. Major-components coverage continues through the third year or 10,000 hours. Extended protection plans are available.

More Support. Every Customer.

Cummins QSK50 engines are backed by the world's largest and most capable parts and service network, with over 600 authorized distributors around the globe. For more information, call 1-800-DIESELS™ (1-800-343-7357) or go to cumminsengines.com.