

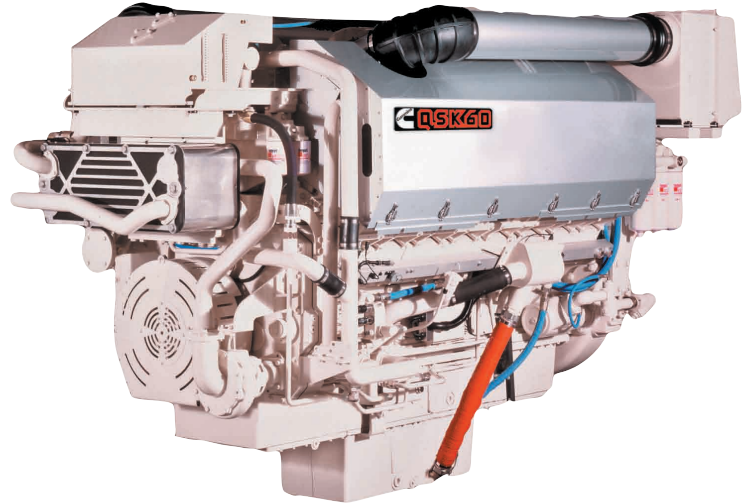
# QSK60



## MARINE PROPULSION AND AUXILIARY ENGINES

### Specifications

ENGINE TYPE	V-16 CYLINDER, 4 STROKE DIESEL
BORE & STROKE	159 mm x 190 mm (6.25 in x 7.48 in)
DISPLACEMENT	60.2 L (3672 in <sup>3</sup> )
ROTATION	COUNTERCLOCKWISE FACING FLYWHEEL
ASPIRATION	TURBOCHARGED/AFTERCOOLED
EMISSIONS	IMO, CCNR



### Ratings

ENGINE MODEL	OUTPUT POWER			ENGINE SPEED RPM	RATING DEFINITION	FUEL CONSUMPTION** L/hr (gal/hr)
	kW	HP	kWe*			
<b>VARIABLE SPEED</b>						
QSK60-M	1492	2000	-	1600	CONTINUOUS	252.0 (67.0)
QSK60-M	1492	2000	-	1800	CONTINUOUS	256.4 (68.0)
QSK60-M	1641	2200	-	1800	CONTINUOUS	278.6 (74.0)
QSK60-M	1715	2300	-	1900	HEAVY DUTY	294.1 (78.0)
QSK60-M	1864	2500	-	1900	MEDIUM CONTINUOUS	313.9 (83.0)
<b>FIXED SPEED</b>						
QSK60-D(M)	1563	2095	1500	1500 (50 Hz)	PRIME	185.8 (49.1)
QSK60-D(M)	1900	2547	1825	1800 (60 Hz)	PRIME	236.6 (62.5)

\* kWe reflects the approximate amount of power available when used in a keel cooled genset configuration

\*\* Average fuel consumption based on ISO 8178 E3 Standard Test Cycle (variable speed models) and ISO 8178 D2 Standard Test Cycle (fixed speed models)



Photo courtesy of Alan Haig-Brown

The tug HMS Frontier is powered by two QSK60-M engines

### The Cummins Advantage

24 Hour Customer Support

Reliable & Durable Products

Best in Class Life Cycle Cost

Comprehensive Global Warranty

**EVERY™  
JOB.**

# QSK60



## MARINE PROPULSION AND AUXILIARY ENGINES

### Features and Benefits

**Engine Design** - Robust engine block designed for continuous duty operation and long life. Metric O-ring seals and edge molded gaskets eliminate fluid leaks. Ductile single-piece iron piston design with hardened liners and nitride coated rings for exceptional durability

**Fuel System** - Reliable Cummins HPI fuel system offers precise fuel injection for less smoke and responsive performance

**Cooling System** - Low temperature aftercooling. Engine-mounted titanium plate heat exchanger provides superior durability with minimal maintenance requirements

**Exhaust System** - Dry exhaust manifold with water shielding for reduced fuel consumption and improved performance

**Air System** - Cummins turbochargers optimized for marine applications. Two pump, two loop, low temperature aftercooling for efficient operation and optimization of performance

**Lubrication System** - Standard capacity (261 L [69 gal]) or large capacity (378 L [100 gal]) oil pan available allows for longer marine grade oil change intervals. Pre-lub starter protects engine from damage due to dry starts

**Electronics** - Quantum system electronics control engine performance by monitoring critical operating parameters. Benefits include complete engine protection, minimal smoke and optimized fuel consumption. Simplified electrical customer interface box for all vessel connections to reduce installation complexity

**Certifications** - Complies with IMO emissions regulations. Certificates of compliance are available from the U.S. EPA and Lloyd's Register of Shipping. Consult your local Cummins professional for a complete listing of current marine agency approvals for this engine

#### Optional Equipment

- Front power take-off adapter
- Touch screen color remote control panel
- Digital display
- Sentinel Oil Management System allows for extended or eliminated oil changes
- Eliminator
- SAE B accessory drive
- Fully integrated type approved alarm and safety system

Cummins is a pioneer in product improvement. Thus specifications may change without notice. Illustrations may include optional equipment.

### Dimensions

<b>LENGTH</b>	3357 mm	132 in	KC
	3645 mm	144 in	HX
<b>WIDTH</b>	1760 mm	69 in	
<b>HEIGHT</b>	2409 mm	95 in	
<b>WEIGHT</b>	8754 kg	19300 lb	

Dimensions and weight may vary based on selected engine configuration.

### Every Question. Answered.

**Marine Web Site ([marine.cummins.com](http://marine.cummins.com))** - Offers product specifications, installation drawings and technical information as well as answers to frequently asked questions

**QuickServe® Online ([quickserve.cummins.com](http://quickserve.cummins.com))** - Gives easy access to parts and service information for all Cummins engines. Find the information you need with our high-speed search function and your engine's serial number



**Cummins Online Product Registration** - Register your Cummins engine quickly and easily at [marine.cummins.com](http://marine.cummins.com) to ensure quality parts and service

**Distributor Expertise** - The best source for service, parts and application assistance. To find your nearest Cummins distributor/dealer, go to the Worldwide Service Locator (click on Service Locator at [wsl.cummins.com](http://wsl.cummins.com)). If you need assistance beyond what your local Cummins professional has offered, contact the Regional Office for your area or send an e-mail to [wavemaster@cummins.com](mailto:wavemaster@cummins.com)

**Global Support Network** - Backed by the strength of Cummins distribution network with over 550 marine service locations in 160 countries, Cummins engines include a comprehensive, worldwide warranty



Cummins Inc.  
4500 Leeds Ave. - Suite 301  
Charleston, SC 29405  
U.S.A.

Internet: <http://marine.cummins.com>

Bulletin M10054 Printed in U.S.A. 09/06  
©2006 Cummins Inc.